



The Ridgeway, Mill Hill Village, NW7

£900,000

2120 Sq Ft - Located on a private road, backing onto woodland is this rarely available spacious four-bedroom, two-bathroom townhouse is situated in the highly sought-after area of Mill Hill Village.

The ground floor features a bedroom, utility room, internal access to the garage and a beautiful rear garden. On the first floor, you'll find a generous reception room opening onto a balcony with stunning views over surrounding greenery, as well as a separate kitchen and guest W/C.

The second floor offers a large principal bedroom with fitted wardrobes, two further bedrooms with built-in storage, and two bathrooms.

Additional benefits include off-street parking, walking distance to Mill Hill East Station, proximity to excellent local schools, and potential to refurbish, offering the opportunity to create a truly exceptional family home. Sole Agent. Chain Free.

The Sellers Say: 'I fondly remember enjoying the peaceful woodland directly accessible from the rear garden during my childhood a place that offered a safe, natural retreat and played a cherished role in a happy upbringing.'

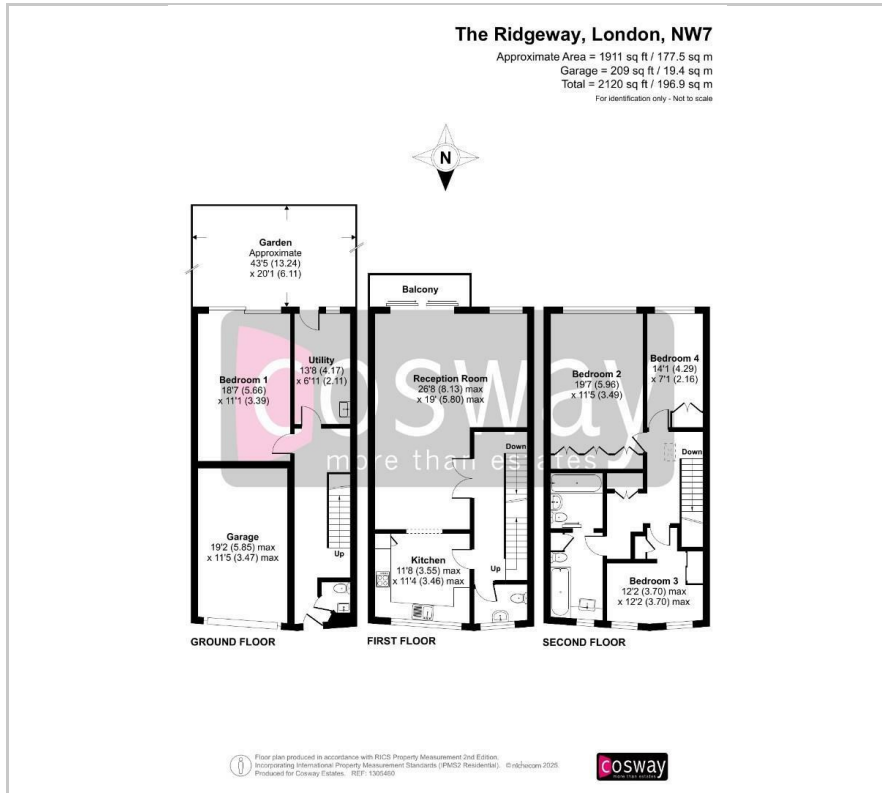
Viewing

Please contact our Mill Hill Office on 02089590011 if you wish to arrange a viewing appointment for this property or require further information.

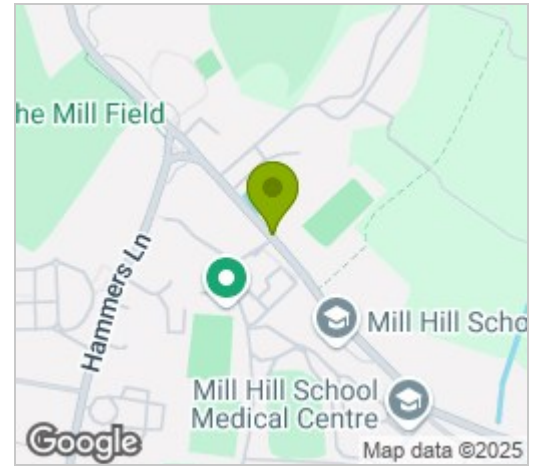
- 2120 Sq Ft -
- MILL HILL VILLAGE - PRIVATE ROAD
- 4 BEDROOMS
- 2 BATHROOMS
- BACKING ONTO WOODLAND
- SPACIOUS RECEPTION ROOM
- OFF-STREET PARKING
- CLOSE TO EXCELLENT LOCAL SCHOOLS
- CHAIN FREE



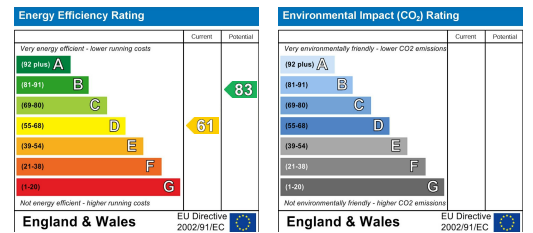
Floor Plan



Area Map



Energy Efficiency Graph



These particulars, whilst believed to be accurate are set out as a general outline only for guidance and do not constitute any part of an offer or contract. Intending purchasers should not rely on them as statements of representation of fact, but must satisfy themselves by inspection or otherwise as to their accuracy. No person in this firm's employment has the authority to make or give any representation or warranty in respect of the property.